

KA-1100RX



*Traveling position in working site

<http://www.kato-works.co.jp>

- Study and follow the local regulation for driving position regarding mounting of Superstructure, Boom, Fly jib and Counter weight.
- Before you use the crane, study the instruction manual thoroughly and follow the instructions it contains.
- Some differences may arise between the machine delivered and the photographs in the catalog due to the country the crane will be used in or any added improvements.
Note : The specification may be changed without notice.
- The actual colors of the body and interior may appear slightly different from those shown in this catalog due to the limitations of photography and printing.

● Contact for enquiry:

KATO KATO WORKS CO.,LTD.

QUALITY & EXPERIENCE
SINCE 1895

KA-1100RX

9-37, Higashi-ohi 1-chome, Shinagawa-ku, Tokyo, 140-0011, Japan / Tel.: Head Office: Tokyo +81(0)3 3458-1111 Overseas Marketing Department: Tokyo +81(0)3 3458-1115 / FAX: Tokyo +81(0)3 3458-1153

KA-1100RX ALLTERR



*Traveling position in working site

KATO



6-section pin-lock type

110t

Max lifting capacity

Accommodates for use in various worksite due to the many excellent telescoping patterns

High rigidity round shaped Boom

■ Boom lifting capacity	
● Max lifting capacity	110t×2.0m
● Boom length	11.1m~51.3m
● Max lifting height	52.2m
● Boom derricking angle	-1.0~84°
● Max rated load at full boom extension	9.0t

2°~60°

8.8~20.4m
Step-less work is possible

Max lifting height **72.3m**



Easily detachable 3 section Full Power Jib

Round shaped high rigidity jib

■ Jib lifting capacity	
● Jib length	8.8m~20.4m
● Maximum lifting height	72.3m
● 33.2m+8.8mSL (5°)	At a 26.6m working radius 5.6t
● 51.3m+20.4mSL (2°)	At max lifting height 2.1t
● 51.3m+20.4mSL (30°)	At a 57.7m working radius 0.5t

● "SL Jib-less Boom capacity" is selectable

Can be mounted and transported with a 10ton class truck mounted with a crane with a 3 section boom

Loading-bed of more than 8.8m in length



● Main hook, aux winch, SL Jib, hose reel, part of the weight etc., giving a total weight of approx. 7.8t

11.1~51.3m

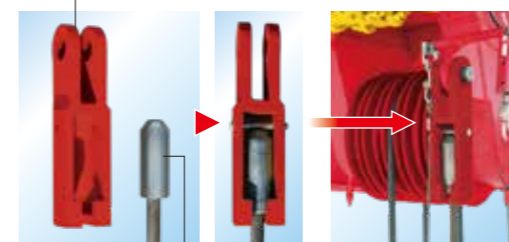
-1°~84°



NEW

Hook fitting sped up by the new rope edge type

Rope socket



Hoisting wire-rope edge

NEW

Various hook variations!
Hook Options

- Improved aux hook
- Compact size
- Larger diameter hook



- 55t Ramshorn Hook (option)
- New 37t Ramshorn Hook configuration
- 37t single Hook (option)

Made in Japan, non-demountable type All Terrain Crane

Reduced running costs due to using new single engine system
Can travel with a mounted boom on less than 12 ton per axle load, therefore reducing transportation costs.



*Traveling position
(Hook, winch, hose reel are not included)



Equipped with a wide cabin
Original carrier manufactured specifically for cranes



▲Large size cabin
Ergonomic and comfortable cabin with wide visibility.



▲Large storage type bed
(2320mm×600mm)



▲Equipped with a LCD cluster meter and a touch screen information display

NEW Anti-Lock Braking System (ABS)

- Improved braking power and stability on slippery road surfaces.

Low fuel consuming high power engine

- Adopts a Single Engine System
- High performance and environmentally friendly EUROMOT 4 Engine
- SCR (Selective Catalytic Reduction) reduces NOx emission.

■ Max. Output	320kW / 1700min ⁻¹
■ Max. torque	2100N·m / 1300min ⁻¹

COUNTER WEIGHT Weight

Variety of weight variations realized due to being able to mount the side weights in the middle.
Ensures stability for various work conditions.
Even with full counterweight, the tail slewing radius is only 3.7m, making it the smallest in its class.

8 times separable, 5 types of counter weight configurations

- Even with full counterweight the tail slewing radius is still within the max outrigger extension width
- At full counterweight even two times lifting is possible because of the shackle ring settings



Counterweight-less capacity & Weight on carrier capacity setting both available ▼



5 At 29.8t center-weight, tail slewing radius is 3.7m



1 At 7.4t center-weight, tail slewing radius is 3.3m



2 At 15.3t center-weight, tail slewing radius is 3.7m



3 At 21.8t center-weight, tail slewing radius is 3.7m



4 At 25.8t center-weight, tail slewing radius is 3.7m

*Mountable from inside ▶

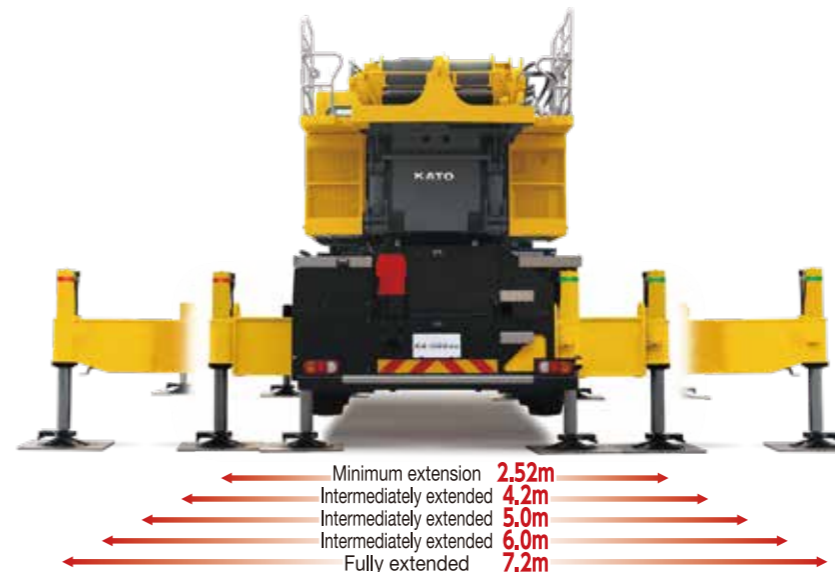
ADVANCED FUNCTION Outrigger

5 Outrigger positions are available

Outrigger control panel

(right side of carrier)

- Outrigger easy to set thanks to the semi-automatic leveling feature
- Outrigger reaction force display function (Also displayed in the crane cabin)



LCD touch screen panel ▲



Safety + Comfortability + Advanced Features



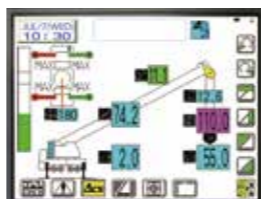
*The monitor screen image is synthesized

Comfortable Tilting type Cabin

- Tilting range is 0°~15°; Tilt type necessary for long boom work. Secures overhead visibility and ensures safe and comfortable work.
- Two air conditioner outlets located in the front on the right and left side. In addition another outlet is in the foot area to provide more operator comfort.

**Adopts New ACS moment limiter
High quality display and touch screen control**

- Hook lift is displayed to support various conditioning
- It limits the load factor to 80%-100% of rated lifting capacity and keeps a safe margin.
- Instantaneous/average wind speed can be displayed on screen



▲Touch screen color display



▲Jog dial navigator



▲Seat suspension



NEW

Adopts New Electric Joysticks

Newly adopted electric Joystick is easy to grip, making operation light and suitable for crane operation.
(Vibration function during winch operation)

Pedal function selection switch



The right foot pedal can be arbitrarily selected from the main winch, aux winch & boom derricking operation.



▲Tea table (option)

Adopts New Information Display

NEW

With the new 8.4inch can now display various information. Moreover guidance telescopic operation and various settings for crane operation can also be displayed.



Operation leverselection function lever selection

There are 4 crane operation patterns that can be assigned to the joystick and pedal.



Operation speed function setting

Various crane operation speeds can be set in 10 steps. The setting status can store 3 patterns at a time.



▲Home screen (Level indicator, Outrigger reaction force)



▲Boom telescoping screen



▲Maintenance screen

K·COR



- The K·COR is data logger system which records working status of crane. Data is extractable by the SD card and can be confirmed through K·COR program.



Further Advanced Features

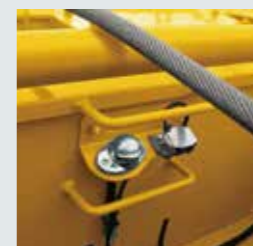
Equipped with features around the crane with reliability and convenience to the user.



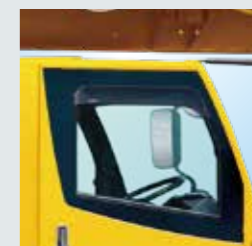
▲Outrigger LED worklight



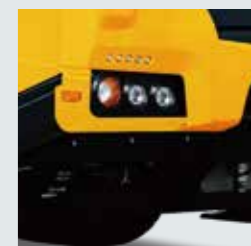
▲Toolbox



▲Winch camera



▲Carrier door visor (option)



▲LED headlamp



▲DEF tank



▲LED ACS outside indicator



▲Cab LED worklight



▲Electric retractable mirrors



▲Searchlight



- Aluminium step
- Aluminium fender

*Traveling position in working site



▲Electric sliding step (With step storage support switch)

▲LED combination lamp



▲Front accessory socket



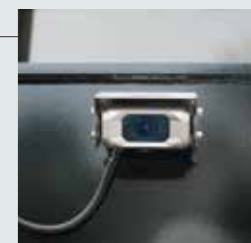
▲Mobile phone storage & Pedal operation selector switch



▲PA system (microphone)



▲Storage, rear drink holder & accessory socket



▲Rear camera